



# Bonnabel Blvd: Metairie Rd - I-10 (CE&I) Contract No. 4400028908



Bonnabel Blvd: Metairie Rd  
I-10 (CE&I)  
Metairie, LA

Contract No. 4400028908

## Statement of Qualifications

**Infinity Engineering  
Consultants, LLC.**  
4001 Division Street  
Metairie, LA 70002

P: 504.304.0548

F: 504.355.0265

Raoul V. Chauvin, III, P.E.  
Principal-in-Charge  
rchauvin@infinityec.com

March 28, 2024

# Infinity Engineering Consultants, LLC.



## Letter of Interest

### Louisiana Registered Engineering Firm Number

Infinity Engineering Consultants, LLC.  
EF. 0001309

### Office Location

4001 Division Street  
Metairie, LA 70002  
p. (504) 304-0548

### Contact Persons



Raoul V. Chauvin, III, P.E.  
Principal Partner  
rchauvin@infinityec.com



William J. Thomassie, P.E.  
Principal Partner  
wthomassie@infinityec.com



Nickie Monica  
Director of Business Development  
nmonica@infinityec.com

March 28, 2024

Department of Transportation & Development  
Consultant Contracts Services  
1201 Capitol Access Road, Room 405-E  
Baton Rouge, LA 70802  
DOTDConsultantAds80@la.gov

Re: Contract No. 4400028908 Bonabel Blvd: Metairie  
Rd – I-10 (CE&I)

With reference to the above stated project, Infinity Engineering Consultants, LLC is pleased to present our statement of qualifications. Upon thoroughly reading the request for qualifications, we believe Infinity's team of engineers and construction inspectors meet and exceed the necessary qualifications to successfully oversee the administration of the construction contract and construction engineering inspection services for the roadway and drainage structures improvements along Bonabel Blvd.

Infinity Engineering Consultants is a Metairie, Louisiana based firm, located less than 3 miles from the Bonabel Blvd. project site, that provides multi-disciplinary engineering services to both the public and private sectors. As a multi-discipline firm, comprising of civil, structural, mechanical, and electrical engineering, our firm is equipped to provide construction engineering as well as construction administration oversight for this important roadway project. Infinity's full-time staff currently includes eleven (11) professional engineers, two (2) engineering interns, four (4) engineering graduates, ten (10) AutoCAD designers, two (2) advanced measurements technicians, and three full-time (3) resident inspectors, as well as supportive administrative.

Across Infinity's 20-year company history, the firm holds extensive experience working with public agencies in the project manager role of prime consultant for infrastructure engineering design. Recently, Infinity enjoyed a collaborative working relationship with the Louisiana Department of Transportation & Development as we completed initial structural engineering designs for two off-system bridge replacement projects. Currently, Infinity is reaching the construction completion milestone of several large roadway related projects including Colony Place Street Lighting and Mid-City Group B roadway improvements. Additionally, Infinity has recently ended providing construction administration services for water and sewer line installation in Myrtle Grove, LA., as well as the Empire Louisiana Harbor of Refuge. With the recent completion of several large construction projects, Infinity's engineers and resident inspectors are able to transition to and focus on the Bonabel Blvd CE&I.

Beyond Infinity's roadway experience, our team also completed the construction administration on several high-profile projects, including the renovation and electrical upgrades to Jackson Square as well as the CMAR design of the new Canal Street Ferry. Both of these projects consisted of refreshing two iconic New Orleans locations while simultaneously working to minimize downtime to these heavily traveled areas. Throughout the construction of the new ferry terminal and wharf, the ferry service was minimally impacted. These project experiences make our team uniquely qualified for this project, as we not only hold the experience of designing roadway improvements construction documents, but also carrying out the successful construction administration that see these projects go from design to commissioning.

Infinity is proud of our reputation as being honest, reliable, and capable. As such, we have provided within our approach and methodology section snippets of reference letters that attest our work ethic. Pertinent resumes and project examples for the entire team are contained in the following DOTD 24-102 form.

We steadfastly confirm the following:

- Infinity Engineering Consultants, LLC. is within good standing
- The proposed team meets all of the minimum personnel requirements
  - Raoul V. Chauvin, P.E. and William Thomassie, P.E. are Infinity's principal partners who are registered professional engineers in the State of Louisiana in civil engineering
  - Kevin Hurtt, P.E. is a responsible member of the prime consultant team who is currently registered in the state of Louisiana as a professional engineer in civil engineering
  - Ricardo Contreras, P.E. is a responsible member of the Infinity team who is a professional civil engineer, registered in the state of Louisiana, and shall have a minimum of five (5) years of experience in responsible charge of managing road construction projects.
- The firm holds all licenses necessary to legally provide the related services in the State of Louisiana
- The lead professional for each engineering category is a licensed professional in that area with a minimum of 5 years of experience in the category in which they will be the person in responsible charge.
- Infinity Engineering does not hold a record of substandard work
- Infinity Engineering has never engaged in any unethical behavior

Infinity Engineering Consultants, LLC. is a registered DBE firm with the Louisiana Unified Certification Program for Disadvantaged Business Enterprises, the City of New Orleans, and the Regional Transit Authority of New Orleans. Additionally, Infinity Engineering is certified by the Louisiana Department of Economic Development as a Small and Emerging Business Enterprise (SEBD). Whenever possible, Infinity is committed to supporting and working alongside fellow emerging businesses and disadvantaged business enterprises. As such, one our subconsultant team members is a registered Disadvantaged Business Enterprise, Legacy Professional Services, LLC.

Documents Enclosed

- Letter of Interest
- Infinity Team DOTD 24-102 Form
- DBE Certificates

Closing

Infinity takes pride in the high-profile projects we have ushered from design through construction across the Gulf Coast We are confident that we have assembled a team of containing civil engineers, geotechnical engineers, and resident inspectors capable of overseeing the roadway and drainage construction along Bonnabel Blvd. effectively and efficiently. We respectfully request that the LADOTD select Infinity Engineering Consultants for this important infrastructure project so we can continue to work to improve our Metairie community. If you have any questions or require additional information, please call me at (504) 304-0548.

By signing this letter, the Respondent certifies that the signatory is authorized to bind the Respondent and certifies the content of this letter.

Sincerely,

A handwritten signature in blue ink that reads "Raoul V. Chauvin III". The signature is written in a cursive style with a horizontal line under the name.

Raoul V. Chauvin, III, P.E.  
Infinity Engineering Consultants, LLC  
(504) 304-0548  
rchauvin@infinityec.com

**DOTD FORM: 24-102**

(Revised January 1, 2023)

**PROPOSAL TO PROVIDE CONSULTANT SERVICES**

Prime consultant shall complete the DOTD Form 24-102 without altering the Form's text; however, the instruction and/or guidance for Sections 12 through 23 can be removed but do not remove Section title and number.

ANY CONSULTANT FAILING TO SUBMIT ANY OF THE INFORMATION REQUIRED ON THE DOTD FORM 24-102, OR PROVIDING INACCURATE INFORMATION ON THE DOTD FORM 24-102, MAY BE CONSIDERED NON-RESPONSIVE.

1. Contract Name as shown in the advertisement	BONNABEL BLVD: METAIRIE RD – I-10 (CE&I) JEFFERSON PARISH
2. Contract Number(s) as shown in the advertisement	4400028908
3. State Project Number(s), if shown in the advertisement	State Project No. H.014334.6 Federal Aid Project No. H014334
4. Prime consultant name (name must match as registered with the Louisiana Secretary of State where such registration is required by law)	<b>Infinity Engineering Consultants, L.L.C.</b>
5. Prime consultant license number (as registered with the Louisiana Professional Engineering and Land Surveying Board (LAPELS) if registration is required under Louisiana law)	EF.0003109
6. Prime consultant mailing address	4001 Division Street Metairie, LA 70002
7. Prime consultant physical address (existing or to be established, if location is used as an evaluation criteria)	4001 Division Street Metairie, LA 70002
8. Name, title, phone number, and email address of prime consultant's contract point of contact	Raoul V. Chauvin, III, P.E. Principal rchauvin@infinityec.com 504-304-0548
9. Name, title, phone number, and email address of the official with signing authority for this proposal	Raoul V. Chauvin, III, P.E. Principal rchauvin@infinityec.com 504-304-0548

Prime consultant should enter the firm name in the footer at the bottom of this page. (It will carry over to subsequent pages.)

10. This is to certify that all information contained herein is accurate and true, and that the team presently has sufficient staff to perform these services within the designated time frame. By submitting this proposal, proposer certifies that it is not engaged in a boycott of Israel and it will, for the duration of its contract obligations, refrain from a boycott of Israel. Proposer also certifies and agrees that the following information is correct: In preparing its response, the proposer has considered all proposals submitted from qualified, potential subcontractors and suppliers, and has not, in the solicitation, selection, or commercial treatment of any subcontractor or supplier, refused to transact or terminated business activities, or taken other actions intended to limit commercial relations, with a person or entity that is engaging in commercial transactions in Israel or Israeli-controlled territories, with the specific intent to accomplish a boycott or divestment of Israel. The proposer also has not retaliated against any person or other entity for reporting such refusal, termination, or commercially limiting actions. DOTD reserves the right to reject the response of the bidder or proposer if this certification is subsequently determined to be false, and to terminate any contract awarded based on such a false response.



Signature above shall be the same person listed in Section 9:

3/28/2024

Date:

11. If a Disadvantaged Business Enterprise (DBE) goal has been set for this advertisement, indicate which firm(s) will be used to meet the DBE goal and each firm(s)' percentage.

Firm(s):

Firm(s)' %:

**12. Past Performance Evaluation Discipline Table:**

As indicated in the advertisement, insert a completed table here. The percentages for the prime and sub-consultants must total 100% for each past performance evaluation discipline, as well as the overall total percent of the contract.

The **only** past performance evaluation disciplines to be used are: Road, Bridge, Traffic, CE&I/OV, Geotech, Survey, Environmental, Data Collection, Planning, Right-of-Way, CPM, ITS, Appraiser and Other (please specify).

Past Performance Evaluation Discipline(s)	% of Overall Contract	Prime Infinity Engineering Consultants, LLC.	ECS Southeast, LLC.	Legacy Professional Services, LLC.	Firm D	Firm E	Each Discipline must total to 100%
CE&I/OV	90%	80%		20%			<b>100%</b>
Geotech	10%		100%				<b>100%</b>
							<b>100%</b>
Identify the percentage of work for the <b>overall contract</b> to be performed by the prime consultant and each sub-consultant.							
Percent of Contract	<b>100%</b>	72%	10%	18%			

**13. Firm Size:**

For all firms that are part of this team, indicate the approximate number of personnel to be committed to this contract, by DOTD Job Classification and the total number of personnel within the firm that could provide support, if needed. If a specialized job classification is required and not included on the DOTD job classification list, specify “Other (please specify)” and include the classification title inside the parentheses.

The DOTD Job Classification(s) to be used can be found at the following link:

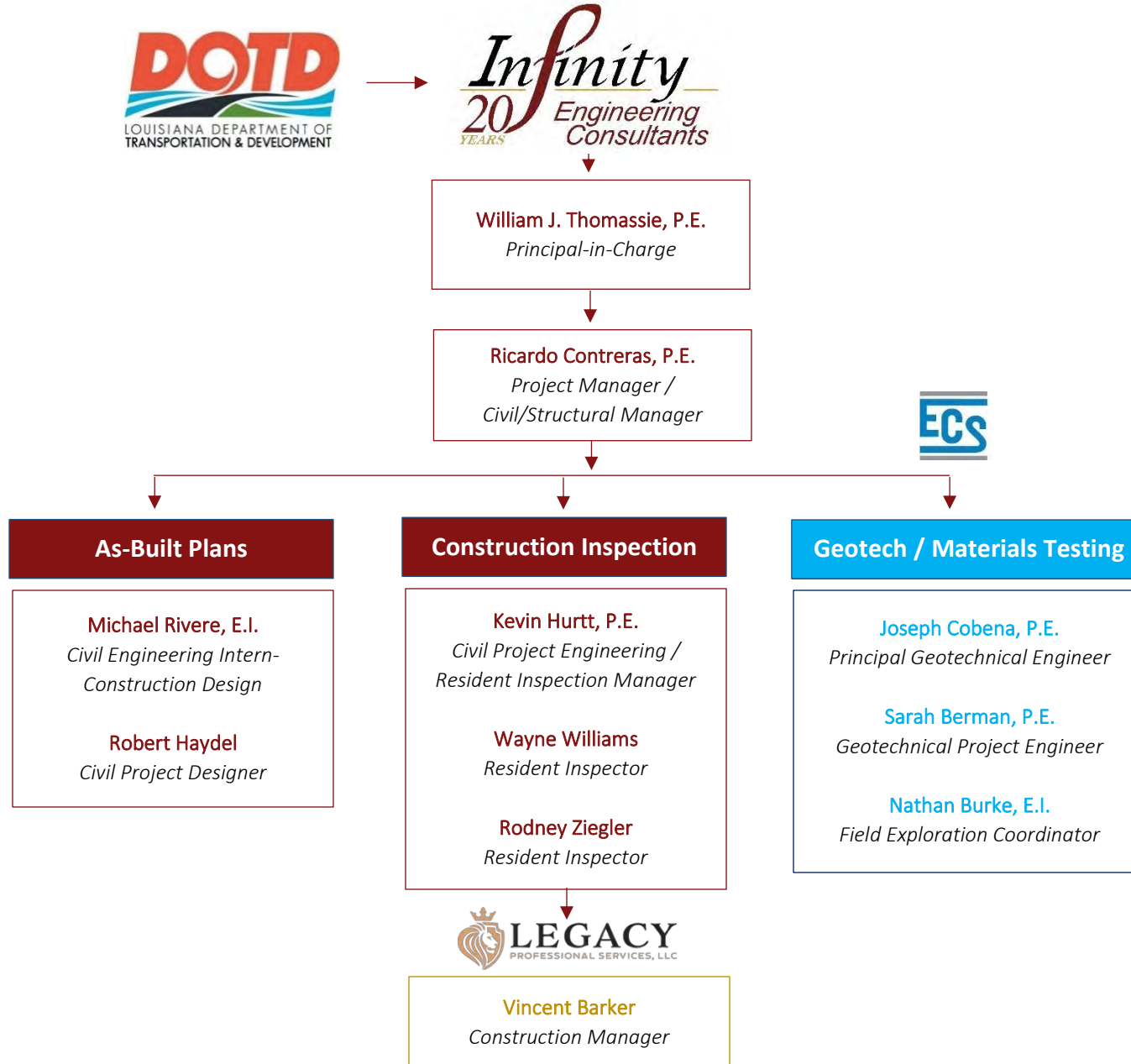
[http://www.sp.dotd.la.gov/Inside\\_LaDOTD/Divisions/Engineering/CCS/Job\\_Qualification/Job%20Classifications%20with%20Descriptions.pdf](http://www.sp.dotd.la.gov/Inside_LaDOTD/Divisions/Engineering/CCS/Job_Qualification/Job%20Classifications%20with%20Descriptions.pdf)

Firm name	DOTD Job Classification	Number of personnel committed to this contract	Total number of personnel available in this DOTD Job Classification (if needed)
Infinity Engineering Consultants, L.L.C.	Engineer	3	7
Infinity Engineering Consultants, L.L.C.	Engineer Intern	1	2
Infinity Engineering Consultants, L.L.C.	Other (Engineering Graduate)	1	2
Infinity Engineering Consultants, L.L.C.	Inspector	1	3
Infinity Engineering Consultants, L.L.C.	Designer	1	7
Infinity Engineering Consultants, L.L.C.	Drafter	1	2
ECS Southeast, LLC.	Principal	2	5
ECS Southwest, LLC.	Engineer	3	25
ECS Southwest, LLC.	Engineer Intern	1	1
Legacy Professional Services, LLC.	Principal	1	2
Legacy Professional Services, LLC.	Inspector	1	5

(Add rows as needed)

**14. Organizational Chart:**

Provide an organizational chart showing ALL relevant prime consultant and sub-consultant (if applicable) personnel assigned to the contract, area of project responsibility for each, and reporting lines for the purposes of this contract. An individual's role does not necessarily have to match their DOTD job classification identified in Section 13. **If applicable, identify all personnel performing traffic engineering analysis and/or QC of traffic engineering analysis by placing an asterisk next to their name. Include the certificates required by the Traffic Engineering Process and Report Training Requirements article of the Advertisement in Section 20.** It is acceptable to use an 11x17 format for Section 14.





**15. Minimum Personnel Requirements:**


Use the table below to identify both prime consultant and sub-consultant staff designated to work on this contract meeting the Minimum Personnel Requirements (MPRs) specified in the advertisement. Ensure the résumé reflects the required experience stated in the MPR. **Make sure the P.E. discipline is also listed (highlighted in table) that is meeting the MPR; e.g. professional civil engineer should show the discipline of the license as civil if meeting that MPR.**

MPR No. Do not insert wording from ad	Personnel being used to meet the MPR (Individual(s) may not satisfy more than one MPR unless specifically allowed by Attachment B of the advertisement)	Firm employed by	Type of license and discipline meeting MPR/ certification & number (Ex: PE # - Civil)	State of license	License / certification expiration date
1	William Thomassie, P.E.	Infinity Engineering Consultants, LLC.	PE #0027421 - Civil	LA	9/30/2025
2	Kevin Hurtt, P.E.	Infinity Engineering Consultants, LLC.	PE #0048668 - Civil	LA	9/30/2024
3	Ricardo Contreras, P.E.	Infinity Engineering Consultants, LLC.	PE #0028533 - Civil	LA	9/30/2025

(Add rows as needed)

**16. Staff Experience:**


Résumés shall be provided for all prime and sub-consultant personnel listed in Sections 14 and/or 15 of the proposal. Résumés of personnel not identified in Section 14 or Section 15 of the proposal should not be included and will not be evaluated. Résumés should be **limited to 2 pages per person**. Any certificates required by the advertisement are to be placed in Section 20.

Firm employed by <b>Infinity Engineering Consultants, LLC.</b>			Meets MPR No. 1
Name	<b>William J. Thomassie, P.E.</b>		Years of relevant experience with this employer 20
Title	<b>Principal-in-Charge</b>		Years of relevant experience with other employer(s) 12
Degree(s) / Years / Specialization			<b>Bachelor of Science / 1992 / Civil Engineering</b>
Active registration number / state / expiration date			<b>No. 27421 / LA / 9/30/2025</b>
Year registered	<b>1997</b>	Discipline	<b>Civil/Structural Engineering</b>
Contract role(s) / brief description of responsibilities			<p><b>Principal-in-Charge</b></p> <p>As Principal Partner of Infinity Engineering Consultants, William J. Thomassie, P.E. is one of the registered Supervising Professionals for the firm and is responsible for the management of all engineering production. With many of Infinity's projects requiring up to \$45,000,000 for installation or modifications, Mr. Thomassie's guidance and shaping of designs, along with construction support, has enabled project completion on schedule and with minimal adverse impact on commerce in the area. Additionally, Mr. Thomassie hold active professional engineering registration in fifteen states.</p> 
Experience dates (mm/yy–mm/yy)	Experience and qualifications relevant to the proposed contract; <i>i.e.</i> , “designed drainage”, “designed girders”, “designed intersection”, etc. Experience dates should cover the time specified in the applicable MPR(s).		
11/2012 – 3/2021	<b>Mid-City Street Roadway Improvements</b> – Principal Engineer for the identification and quantification of roadways, driveway aprons, sidewalks, curbs, and drainage structures repairs. Infinity developed a scoping report including the locations and descriptions of eligible repairs, added repairs, <b>photo documentation and justification of additional repairs for DPW</b> to obtain additional funding from FEMA. Infinity's scope of services also included providing resident inspection services throughout construction.		
6/2011 – 5/2013	<b>City of Slidell Kostmayer Avenue Resurfacing and Drainage Improvements</b> – Lead Project Manager in the drainage design, material quantities, and cost estimating for the roadway repair and replacement design and all utility improvements. The project included the asphalt mill and overlay of 3,300 linear feet of street, including striping, drainage improvements, street alignment and handicap sidewalk ramps. Infinity's scope of services also included providing resident inspection services throughout construction.		
12/2009 – 9/2011	<b>VA Medical Center Roadway and Infrastructure Improvements</b> – Project Manager for the design of 3,000 linear feet of streets and utilities to correct deficiencies and support a new medical center. Designs included all roadway paving, including concrete and asphalt, drainage improvements, addition of greenscape, and ADA ramps. <b>Infinity also provided construction administration and resident inspection services.</b>		
7/2016 – 9/2017	<b>City of New Orleans Bridge Inspections and Ratings</b> – Principal engineer for the field inspections and bridge load rating calculations of <b>five (5) bridges</b> throughout the City of New Orleans as a subconsultant to DEII.		
3/2012 – 3/2012	<b>Scarsdale Bridge Rating</b> – Principal engineer for the <b>engineering analysis and load rating of two bridges</b> at the Plaquemines Parish Scarsdale Pumping Station. The inspection and analysis of the two <b>(2) 25' wide x 150' timber pile foundation bridges</b> with precast pre-stressed concrete decks were necessitated by a load rating for dump trucks using the site.		

4/2020 – 3/2022	<b>Cornerstone Dock Damage Evaluation and Design</b> – Principal for the evaluation of damage caused by a ship collision with a dock and bridge on Cornerstone’s site. Oversaw the <b>collection of advanced measurements, including drone imagery</b> , to assess the damages. Upon the completion of the surveying, a comprehensive analysis report was provided to Cornerstone, including cost estimation for repairs. Additionally, overseeing the completion of designs to repair dock and replacement of vehicular bridge. Throughout construction Infinity provided resident inspection services.
10/2010 – 10/2014	<b>Bannerwood Drainage Improvements Phase I</b> – Project Manager for the engineering design for drainage improvement the ¾ square mile neighborhood in Jefferson Parish. Designs consisted of upgrading subsurface drainage on four (4) outfalls from the Bannerwood Subdivision to the Oakwood Canal, and improvements to subsurface drainage along Willowbrook Drive, all in accordance with the Jefferson Parish Subsurface Drainage Improvement Program prepared by Parish Engineers.
8/2013 – 1/2018	<b>Canal Street/City Park Avenue Intersection Improvements</b> – Project manager for the redesign of transportation hub at the corner of Canal Street and City Park Ave. The project extended the streetcar tracks with a terminus in the first turnaround bay on the street. Final designs integrated the streetcar line, bus lanes, vehicular traffic, cycling lanes, and pedestrian walkways into one transportation hub. Infinity’s scope of services included <b>construction administration and resident inspection services</b> .
10/2009 – 4/2014	<b>Wedmore Drainage Improvements</b> – Project Manager for the engineering design for drainage improvement to prevent localized flooding in Jefferson Parish. Designs included upgrading subsurface drainage on four (4) out-falls of the drainage system in Wedmore Subdivision. The upgrade included miscellaneous improvements to lateral drainage connections and the replacement of disturbed portions of street, curbing, driveways, and sidewalks.
10/2010 – 9/2012	<b>Entergy Evergreen Bridge Design &amp; Construction</b> – Principal engineer for the design of two (2) vehicular bridges to replace aging timber bridges on the approach to Entergy’s Evergreen Substation. Provided the new bridge designs for steel reinforced piles, decking and reinforced retaining wall/abutment. Designs also included a load rating. Additionally, <b>oversaw resident inspection of project</b> .
6/2004 – 12/2004	<b>City of New Orleans Wisner Bridge Inspection</b> – Principal-in-Charge for inspecting, evaluating, and reporting deficiencies in the 3/8-mile-long Wisner Bridge over I-610. The <b>inspection was completed in accordance with LADOTD requirements</b> and a plan for rehabilitation was prepared.
7/2006 – 7/2011	<b>Ollie Drainage Pumping Station Expansion &amp; Vehicular Bridges</b> – Principal for the Ollie Drainage District capacity evaluation project. Project included the evaluation of runoff characteristics for a 3,000 acre basin and the evaluation of the adequacy of an existing pumping station with 5 pumps. Project Manager for the design of the 600 cfs drainage stormwater pump station addition (\$16,200,000 total construction cost). <b>Infinity also provided construction administration and resident inspection services</b> .

Firm employed by <b>Infinity Engineering Consultants, LLC.</b>			Meets MPR No. 3
Name	<b>Ricardo Contreras, P.E.</b>		Years of relevant experience with this employer 8
Title	<b>Civil/Structural Engineering Manager</b>		Years of relevant experience with other employer(s) 21
Degree(s) / Years / Specialization		<b>Bachelor of Science / 1994 / Civil Engineering</b>	
Active registration number / state / expiration date		<b>No. 28533 / LA / 9/30/2025</b>	
Year registered	<b>1999</b>	Discipline	<b>Civil Engineering</b>
Contract role(s) / brief description of responsibilities		<p><b>Project Manager</b> – With over 26 years of civil engineering and project management experience, Ricardo Contreras, P.E. brings the following relevant specialties to this project: roadway design, infrastructure assessment, multi-model complete street design, and roadway drainage design.</p> <p>Certifications:</p> <ul style="list-style-type: none"> <li>• LaDOTD Traffic Control Supervision and Technician</li> <li>• American Traffic Safety Services Association Certification</li> </ul>	
11/2016 – Under Construction	<p><b><u>West Metairie Avenue Rehabilitation and Canal Stabilization</u></b> – Roadway and drainage improvements work included the removal and replacement of concrete paving panels and the repair and adjustment of select drainage outfalls, and implementation of stabilization measures to the embankments of the canal. Responsible for overall design, preparation of plans and specifications, provided cost estimation and coordinated all aspects of the project. Infinity’s scope also includes construction administration and resident inspection.</p>		
1/2016 – 3/2018	<p><b><u>Bannerwood Drainage Improvements Phase II</u></b> – Responsible for construction management of project. Duties included overseeing and managing construction progress and schedules, submittal reviews, review and approval of invoices, and project closeout, participating in progress meetings, resolving construction issues, and coordinating day to day operations for Resident Inspector.</p>		
4/2016 – 1/2018	<p><b><u>Canal Street/City Park Avenue Intersection Improvements</u></b> – Assisted with verification of project quantities during design and with construction administration duties for the intersection improvements where Canal Street meets City Park Avenue. The designs of the transportation hub improvements called for <b>roadway/sidewalk replacement, underground utility relocation design</b>, terminal mechanical and lighting protection systems, and streetcar track foundations. Infinity’s scope of services included resident inspection.</p>		
9/2017 – 12/2019	<p><b><u>Carolyn Park Waterline &amp; Sidewalk Replacement</u></b> – Technical lead responsible for providing construction management for the replacement of approximately 1,500 LF of 8” water line including the <b>removal and replacement of the existing concrete sidewalks and roadway surfaces</b>. Infinity’s scope of services included construction administration and resident inspection.</p>		
12/20 – Present	<p><b><u>Decatur Street Waterline Replacement</u></b> – Technical lead responsible for designing the complete street replacement in the French Quarter neighborhood. The project required design and replacement of roadways, sidewalks, and driveways with the addition of ADA compliant ramps. Responsibilities also included drainage, sewer, and water design as well as analysis, evaluation, and replacement.</p>		
7/2020 – Present	<p><b><u>Lakeshore Group C &amp; D Street Reconstruction</u></b> – Technical lead for the complete reconstruction of several concrete streets. Responsibilities included the drainage analysis for the area, removal and replacement of the existing sewer, water, and drainage systems and the reconstruction of the existing concrete pavement. Roadway reconstruction included modifications to the existing sidewalks, driveways, and reprofiling of the roadway alignments.</p>		
8/19 – Under Construction	<p><b><u>Jourdan Road Wharf Substructure Inspections &amp; Repairs</u></b> – Provided technical assistance for inspection of 1,921 plum and 108 battered open-ended pipe piles beneath the Jourdan Road Wharf. The inspection included above visual inspection, ultrasonic testing (UT, hammer testing, under water inspection via an underwater robot and documentation on the size and type of repairs on each pile. A design report was created to determine methods repairs/replacement beneath the wharf without taking out the above cold storage facility out of service and producing a detailed cost estimate.</p>		



Firm employed by <b>Infinity Engineering Consultants, LLC.</b>			Meets MPR No. 2
Name	<b>Kevin Hurtt, P.E.</b>	Years of relevant experience with this employer	4
Title	<b>Field Services Technical Manager</b>	Years of relevant experience with other employer(s)	1
Degree(s) / Years / Specialization		<b>Bachelor of Science / 2019 / Civil Engineering</b>	
Active registration number / state / expiration date		<b>No. 47668 / LA / 09/30/2024</b>	
Year registered	<b>2024</b>	Discipline	<b>Civil Engineering</b>
Contract role(s) / brief description of responsibilities		<p><b>Field Services Technical Manager</b> - Mr. Hurtt holds 5 years of experience with analysis, design, and inspection of civil and structural engineering projects. Mr. Hurtt works closely with clients to understand their needs and expectations and to implement them in a safe and cost-effective manner. To ensure all phases of a project fit together seamlessly, Mr. Hurtt has experience in coordinating with various engineering disciplines, including electrical and mechanical.</p> <ul style="list-style-type: none"> <li>• <b>Drone Pilot FAA Part 107 sUAS:</b> No. 4519050</li> </ul>	
6/2020 – Under Construction	<p><b>West Metairie Avenue Roadway Rehabilitation</b> – Provided <b>construction administration services</b> for roadway and drainage improvement to (2) miles of West Metairie Avenue between Roosevelt Boulevard and David Drive. The project scope also included the <b>reconstruction of the adjacent sidewalks with side street turnout to meet ADA criteria.</b></p>		
7/21 – Present	<p><b>Terry Parkway Roadway Repairs</b> – Under the direction of Infinity’s engineer of record, assessed existing road surface conditions and designed replacement of damaged panels. Assisted in designing new grading plan for intersection of Terry Parkway and LA23. <b>Coordinated with LADOTD during development.</b></p>		
7/2020 – Present	<p><b>Lakeshore Group C Street Reconstruction</b> – Under the direction of Infinity’s engineer of record, assisted in Assessing existing drainage conditions and designed new pipe layout to improve drainage and meet current Orleans parish requirements. <b>Assessed existing street and sidewalk conditions and made recommendations for repair or replacement.</b></p>		
3/2020 – 6/2022	<p><b>Whitney Avenue Bike Lane</b> – Under the direction of Infinity’s engineer of record, assisted in the design of a two-way bike lane including the <b>repurposing of existing vehicle lanes, conversion of existing sidewalks</b>, and construction of a median path. Prepared cost estimates and assisted in designing lane striping.</p>		
6/2022 – 8/2023	<p><b>North River Rd Bridge Replacement</b> – Project manager for the civil/structural team that designed a replacement bridge for the LADOTD off system bridge program. This included coordination with state and local officials as well as management of an environmental subcontractor. For the preliminary plans of the project, a hydraulic design was <b>performed to the specified DOTD Hydraulics manual</b> to ascertain all viable drainage design options for the bridge.</p>		
4/2021 – 3/2024	<p><b>Shintech Water Intake Platform and Vehicular Bridge</b> – Under the direction of Infinity’s engineer of record, assisted in <b>designing a vehicular bridge</b> with attached pipe rack to access a proposed water intake platform in the Mississippi river. The bridge was designed to accommodate a 41,000 lb. crane with a 30,000 lb. load or HL-93 loading. The pipe rack was designed to support a thirty-inch water line, miscellaneous smaller pipes, and three cable trays. The design was completed using RISA-3D software.</p>		
8/22 – Under Construction	<p><b>Jourdan Rd Wharf Substructure Inspection &amp; Repairs</b> – Project manager for a team that assessed the condition of an existing pile supported wharf facility operated by the Port of New Orleans. Designed pile repair methods for various pile conditions and accessibility. Also designed and prepared drawings for the demolition and reconstruction of a section of wharf. <b>Coordinated with Geotechnical and materials testing subcontractors. Project was designed on a CMAR basis.</b></p>		

Firm employed by <b>Infinity Engineering Consultants, LLC.</b>				
Name	<b>Michael Rivere, E.I.</b>		Years of relevant experience with this employer	13
Title	<b>Civil Engineering Intern – Construction Design</b>		Years of relevant experience with other employer(s)	22
Degree(s) / Years / Specialization		<b>Bachelor of Science / 1988 / Civil Engineering</b>		
Active registration number / state / expiration date		<b>E.I. No. 13329 / LA / 09/30/2025</b>		
Year registered	1989	Discipline	<b>Civil Engineering – Engineering Intern</b>	
Contract role(s) / brief description of responsibilities		<b>Civil Engineering Intern – Construction Design</b> – As Infinity’s Civil/Structural Construction Engineer, Mr. Riviere has experience in inspection, design, construction and repair of roads, bridges, and port facilities. Relevant Expertise Includes: traffic flow access management, multi-model complete street design, rail design, and construction administration.		
8/2017 – 3/2022	<b><u>Harmony Circle Downtown Loop Repavement Design &amp; Inspection</u></b> – Under the direction of Infinity’s engineer of record, prepared plans with specification notes for the replacement of pavement along the streetcar track on St. Charles Ave. and Carondelet St. Also prepared plans to restore and repair the cobble stone pattern on Lafayette Mall at Carondelet St. at the streetcar track crossing. <b>Prepared traffic detour and control plans for the phased construction of this project.</b>			
1/2012 – 10/2016	<b><u>Rampart Streetcar Expansion Utilities Improvements</u></b> – Under the direction of Infinity’s engineer of record, provided construction drawings, specifications, and identification of utility conflict and design. Developed a utility conflict matrix and held several meetings with each utility owner to resolve conflicts and coordinate the relocation of private utility lines. The design included the relocation public utilities such as storm and sanitary drain lines and manholes, waterlines, valves and vaults from 8”- 20” diameter to clear way for the new streetcar guideways and avoid integrate existing century old brick box culvert.			
10/2021 – 10/2022	<b><u>Hurricane Ida Damage Bridge Assessments</u></b> – Performed storm <b>damage assessments of 12 off-system bridges</b> and 18 culvert locations suspected of storm damage. Each structure was inspected and documented with respect to storm related damage. Individual reports with photographs were completed and submitted to the Parish Officials.			
8/2016 – 6/2017	<b><u>City of New Orleans Bridge Inspection and Ratings</u></b> – Project Engineer for local bridge inspection and load rating project. Assembled the final load rating reports to include the inspection forms, photos, and calculations for Infinity’s submittal. This project consisted of performing a <b>condition inspection and evaluation of twelve (12) bridges</b> around the City of New Orleans.			
4/2012 – 11/2017	<b><u>City of New Orleans CBD Waterline Replacement and Pavement Repairs</u></b> – Under the direction of Infinity’s engineer of record, assisted with the design of temporary water lines, trenching, bedding, placement of the new waterline and required <b>pavement repairs</b> . Valves and house connections within the segment were replaced. Fire hydrants along the segment were reconnected and/or relocated. The designs also included large valve pits for 30” water valves; the pit was approximately 18x15’			
8/2013 – 1/2018	<b><u>Canal Street/City Park Avenue Transportation Hub Enhancements</u></b> – Under the direction of Infinity’s engineer of record, performed design efforts involved with the overhead contact system and utility relocation design and the coordination and <b>preparation of construction drawings</b> , record specifications, and calculations. <b>Prepared project schedule</b> and estimates utilized the Federal Transportation Administration (FTA) project estimate workbook to prepare estimates to the FTA’s Project Management Oversight Committee (PMOC) approval. Additionally, coordinated efforts with other RTA consultants, providing information and documents for use in the Environmental Assessment of this project.			
12/2018 – 9/2020	<b><u>Brookter Street Floodgate</u></b> – Under the direction of Infinity’s engineer of record, performed <b>construction administration services</b> for the installation of the Brookter St. Floodgate. The flood gate is a self-deploying buoyant gate activated by rising water. A foundation to contain the retracted gate along with wing walls to integrate into the existing levee system and new roadway approaches were constructed. Signage and warning lights were also installed to warn motorists of gate’s activation.			

Firm employed by Infinity Engineering Consultants, LLC.				
Name	Robert Haydel		Years of relevant experience with this employer	4
Title	Project Civil Designer		Years of relevant experience with other employer(s)	13
Degree(s) / Years / Specialization		Bachelor of Science / 2005 / Physics Master of Science / 2007 / Civil & Environmental Engineering		
Active registration number / state / expiration date		N/A		
Year registered	N/A	Discipline	Civil Design	
Contract role(s) / brief description of responsibilities		Roadway Construction As-Built Plans - With over 16 years of civil engineering experience, Robert Haydel is proficient in construction and project management with experience in managing grant proposals. Mr Haydel's specialties include infrastructure assessment, stormwater system design, and urban hydraulics/hydrology modeling.		
Experience dates (mm/yy–mm/yy)	Experience and qualifications relevant to the proposed contract; <i>i.e.</i> , “designed drainage”, “designed girders”, “designed intersection”, etc. Experience dates should cover the years of experience specified in the applicable MPR(s).			
2/22 – 3/2024	<u>Mid-City Street Repairs Group B</u> – Under the direction of Infinity’s engineer of record, led a team as project manager in designing roadway pavement and curbing, base for the roadway pavement, <b>subsurface drainage</b> , water and sanitary sewer installation, and adjustments as required to driveways and intersecting streets. Additionally, <b>developed construction documents</b> (Specifications and Plan Sheets) and cost estimates.			
7/2020 – Present	<u>Lakeshore Group C &amp; D Roadway Improvements</u> – Under the direction of Infinity’s engineer of record, served as project manager responsible for leading a team in designing the <b>complete street replacement</b> in the Lakeshore neighborhood. The project required design and replacement of roadways, sidewalks, and driveways with the addition of ADA compliant ramps. Responsibilities also included drainage, sewer, and water design, analysis, evaluation, and replacement. Additionally, <b>developed construction documents</b> (Specifications and Plan Sheets) and cost estimates.			
12/20 – Present	<u>Decatur Street Waterline Replacement</u> – Under the direction of Infinity’s engineer of record, led a team as project manager in designing the complete street replacement in the French Quarter neighborhood. The project required design and replacement of roadways, sidewalks, and driveways with the addition of ADA compliant ramps. Responsibilities also included drainage, sewer, and water design, analysis, evaluation, and replacement. Additionally, developed construction documents and cost estimates. Special design considerations were given to the timing of street closures due to the prevalence of one-way streets, and the high traffic of the streets.			
10/2019 – Present	<u>St. Roch North Roadway Repairs</u> – Under the direction of Infinity’s engineer of record, led a team as project manager in designing multiple blocks of complete street replacement. The project required replacement of roadways, sidewalks, and driveways with the addition of ADA compliant ramps. Designs included roadway gradients to create positive cross-sectional and longitudinal drainage. Performed hydraulic design/analysis for drainage system design.			
Jan. 2017 – April 2019	<u>Dupre and S. Gayoso Street Improvements</u> – Utilizing green infrastructure systems, responsible for developing new drainage conveyance and retention technologies to retain a ten-year storm event. <b>Designed the pavement structures (asphalt roadway, porous concrete, sidewalks, driveways, ADA ramps)</b> and managed the design of the sewer and water systems. This project is being used as a model for green infrastructure standards for improvements throughout the City of New Orleans. All work was done under the direction of the engineer of record.			
3/2020 – 3/2024	<u>Pritchard Ditch Drainage Improvements</u> – Under the direction of Infinity’s engineer of record, led a team as project manager in designing the replacement of a drainage canal with box culverts and headwalls. Responsibilities included analysis of drainage conveyance capacity, box culvert and headwall design and placement. Additionally, <b>developed construction documents (Specifications and Plan Sheets) and cost estimate.</b>			
11/2020 – Present	<u>Bainbridge Canal Closure &amp; Roadway Improvements</u> – Under the direction of Infinity’s engineer of record, led a team as project manager in the design and development of the Bainbridge Canal realignment. The improvements included relocating a 1000 ft reach of drainage canal. Responsibilities included analysis of drainage canal cross sectional layout, drainage outfall connections, adjacent infrastructure utilities, and alignment with downstream headwall. Additionally, developed construction documents (Specifications and Plan Sheets) and cost estimate.			

Firm employed by Infinity Engineering Consultants, LLC.				
Name	Wayne Williams		Years of relevant experience with this employer	7
Title	Construction Resident Inspector		Years of relevant experience with other employer(s)	30
Degree(s) / Years / Specialization		Associate of Science: Construction Management		
Active registration number / state / expiration date		N/A		
Year registered	N/A	Discipline	N/A	
Contract role(s) / brief description of responsibilities		<p>Mr. Williams holds over 35 years of experience as a resident inspector for various types of construction projects. He has excellent skills in communication with project managers, resident engineers, and owner’s representatives; reviewing basic engineering data; reviewing contract documents; preparation of technical correspondence and field reports; and interpreting construction plans and specifications. Mr. Williams was one of pioneer inspectors who was involved in the restoration of Katrina damage repairs for the Task Force Guardian.</p> <p>-OSHA – 30 Hour Safety and Health Training          -USACE Certified in Quality Assurance Management          -USACE EM385-1-1 Safety Trained          -Work Zone Traffic Control Flagger and Technician          -Confined Space Entry OSHA 29 CFR 1910.146</p>		
Experience dates (mm/yy–mm/yy)	Experience and qualifications relevant to the proposed contract; <i>i.e.</i> , “designed drainage”, “designed girders”, “designed intersection”, etc. Experience dates should cover the years of experience specified in the applicable MPR(s).			
11/2021 – 3/2023	<b>Mid-City Roadway Repairs Group A &amp; B</b> – Provided resident inspection for the complete street reconstruction for the City of New Orleans. Improvements include roadway pavement and curbing, base for the roadway pavement, subsurface drainage, water and sanitary sewer installation, and adjustments as required to driveways and intersecting streets.			
3/2017 – 3/2018	<b>Bannerwood Drainage Improvements</b> – Served as the resident inspector for the construction of a drainage improvement project for the 3/4 square mile neighborhood located in Jefferson Parish. The project consisted of upgrading subsurface drainage on four (4) outfalls from the Bannerwood Subdivision to the Oakwood Canal, and improvements to subsurface drainage along Willowbrook Drive, including miscellaneous improvements to lateral drainage connections and replacement of disturbed street, driveways, sidewalks, and utilities.			
10/2019 – 11/2020	<b>Dillard University Campus Improvements</b> – Served as <b>resident inspector</b> for various construction projects. Major projects included: <ul style="list-style-type: none"> <li>• Construction of three new student-housing complexes</li> <li>• New Central Plant with underground chilled water system</li> <li>• Major building renovations involving <b>sewer and water line relocations</b>.</li> </ul>			
4/2017 – 9/2017	<b>Joe Brown Park Bridge Replacement</b> – Provided resident inspection for the installation of a replacement bridge in Joe Brown Park. The project included the demolition of the old bridge, its support piers, abutments, and approach paving; installation of new pilings and caps; installation of new deck panels, new abutments, and new approach slabs; and the establishment of new traffic markings and striping within the limits of construction.			



Firm employed by Infinity Engineering Consultants, LLC.				
Name	Rodney Ziegler		Years of relevant experience with this employer	5
Title	Construction Resident Inspection		Years of relevant experience with other employer(s)	15
Degree(s) / Years / Specialization		Certificate of Technical Studies, Electrical Technology		
Active registration number / state / expiration date		N/A		
Year registered	N/A	Discipline	N/A	
Contract role(s) / brief description of responsibilities		As <b>Resident Construction Inspector</b> , Mr. Zeigler holds over 20 years of experience in general construction and carpentry as well as holding his Class D Electrical Journeyman license with the City of New Orleans. Mr. Zeigler is familiar with permitting, insurance, and inspection processes. Additionally, Mr. Ziegler served as an electrician's assistant to a licensed electrical contractor with Lakefront Electric, LLC specializing in renovation and improvements, new construction, repairs, and commercial lighting improvements.		
Experience dates (mm/yy–mm/yy)	Experience and qualifications relevant to the proposed contract; <i>i.e.</i> , “designed drainage”, “designed girders”, “designed intersection”, etc. Experience dates should cover the years of experience specified in the applicable MPR(s).			
3/2019 – 12/2019	<p><b><u>Sewerage &amp; Water Board N. Broad Street Underpass Pumping Station – New Orleans, LA</u></b>            Performed all <b>resident inspection duties for the mechanical, electrical, and general construction phases</b> of the repairs to the N. Broad Street Underpass Pumping Station project. The project included the following:</p> <ul style="list-style-type: none"> <li>• Removal, reconditioning and reinstallation of two 40HP, 25HZ pump motors</li> <li>• Removal and replacement of one 12” trash pump including pump stand, shaft, intermediate pillow block guide bearings, couplings and bearing support channels</li> <li>• Clean, prime, and application of protective coating per specifications and submitted paint schedule to all exposed steel inside building.</li> </ul>			
10/2020 - 4/21	<p><b><u>Read Blvd. East Group C Complete Street Reconstruction – New Orleans, LA</u></b>            Performed all <b>resident inspection duties for eight blocks of complete street reconstruction</b>. Included in the project scope was street pavement, sidewalks, drain point repairs, catch basin, and manhole adjustments. Throughout the inspection process, Mr. Ziegler ensured he maintained constant contact with project managers to record any variations. Additionally, he prepared technical correspondence and field reports; as well as interpreted construction plans and specifications.</p>			
7/2022 - 10/2023	<p><b><u>American Sugar Refining Bulk Loading Building Construction Management – Chalmette, LA</u></b>            Provided construction management services for the erection of the Bulk Loading building at the American Sugar Refining facility in Chalmette, Louisiana. The Bulk Loading building project entails the construction new building and modification of an existing building for truck and rail loading. Responsibilities included:</p> <ul style="list-style-type: none"> <li>• Maintaining organization of the project job site</li> <li>• Maintaining delivery schedules for all material and equipment</li> <li>• Scheduling and holding weekly job site meetings with all contractors and client representatives</li> <li>• Maintaining safety and quality control</li> </ul>			
3/2021 - 8/2021	<p><b><u>Black Pearl East Carrollton Group A Water Line Replacement – New Orleans, LA</u></b>  <b>Resident Inspector for replacement of existing water line</b> throughout E. Carrollton &amp; Black Pearl Neighborhoods of New Orleans . The project includes new fire hydrants, pavement, and sidewalks repairs. The project consists of 373 LF of 8" water main and 302 LF of 10" water main replaced with C-900 PVC. An additional 40 LF of 10" water main was replaced with fusible PVC pipe to allow traffic to continue.</p>			

Firm employed by ECS Southeast, LLC				
Name	<b>Joseph Cobena, PE</b>		Years of relevant experience with this employer	3
Title	Principal   Office Manager		Years of relevant experience with other employer(s)	9
Degree(s) / Years / Specialization			B.S./ 2013/ Civil Engineering	
Active registration number / state / expiration date			0042069 / LA / 03.31.24	
Year registered	2017	Discipline	Civil	
Contract role(s) / brief description of responsibilities			Principal Geotechnical Engineer	
Experience dates (mm/yy–mm/yy)	Experience and qualifications relevant to the proposed contract; <i>i.e.</i> , “designed drainage”, “designed girders”, “designed intersection”, etc. Experience dates should cover the time specified in the applicable MPR(s).			
02/23 - Ongoing	<b>LA1 Port Allen Canal Bridge, 4400024657/H.001234.6, LADOTD</b> Principal Engineer. The existing LA 1 Port Allen Canal Bridge, southbound bent 10S experienced settlement that exceeded the anticipated design. ECS performed pressuremeter testing in up to four borings within the extents of the bent 10S pile cap and up to two borings outside of the influence of the low-mobility grouting (total of six borings). ECS provided integrated services including the drilling of soil test borings by the ECS drill crew and crews under our supervision, undisturbed soil sampling and pressuremeter testing, and laboratory testing of representative soil samples for pertinent index and engineering properties. A final geotechnical data report will be provided to LADOTD upon completion of our analysis.			
04/23 - Ongoing	<b>Savanne Road over Hanson Canal, 4400024657/H.014267, LADOTD</b> Principal Engineer. The Savanne Road Over Hudson Canal project included geotechnical engineering services including geotechnical drilling, laboratory testing, and reporting. The drilling operations included performing two soil borings to 120-feet below the existing surface. The project included a laboratory testing program of the samples collected during drilling. All drilling and laboratory operations were conducted in accordance with current LADOTD guidelines. A final data report with LADOTD borings logs is the final deliverable for the project.			
03/2022 – 07/2022	<b>Atwater – Canadian National Rail Crossing, Baton Rouge, LA, Duplantis Design Group</b> Role: Project Manager. The project includes the installation of a 42-inch steel water line and a 16-inch steel sewer force main to service the proposed new Atwater development. In addition to our geotechnical study, ECS will also provide supervision and monitoring of the project site in accordance with CNRR guidelines to allow for continued operation of railroad during the construction process. Mr. Cobena served as the Principal Engineer of this project.			
02/2022 – 04/2022	<b>Hwy 929 and Parker Road Widening, Prairieville, LA, McKim &amp; Creed</b> Role: Project Manager. The approximately 1.6-mile-long project consists of widening Parker Road and Hwy 929 in Prairieville, Louisiana. A total of 13 borings were drilled to the depths of approximately 15 feet below existing grades. Laboratory testing consisted of soil classification (index) testing of the soils obtained from the soil and hand auger borings. ECS provided recommendations for pavement design, and			

	regarding site preparation and construction observations and testing. Mr. Cobena served as the Principal Engineer of this project.
02/2022 – Present	<b>Asphalt Testing, Biloxi, MS, Overstreet and Associates</b> Role: Project Manager. ECS is performing construction materials testing and inspection throughout the year for several projects. Testing will include asphalt field and laboratory testing. Mr. Cobena is the Principal Engineer for this project.
2018 (Previous employer)	<b>Bonne-Carre Spillway Bridge Replacement, LaPlace, LA,</b> Project Manager/Engineer. Mr. Cobena oversaw the drilling of 6,820 feet of soil borings for the Canadian National Railroad over land, marsh, and shallow water. The projects consisted of drilling, laboratory testing, and design recommendations for the new railroad bridges at the Lake Pontchartrain Railroad Bridge over the Bonne-Carre Spillway and the Norco-Macomb Railroad Bridge in Louisiana.

Firm employed by ECS Southeast, LLC				
Name	Sarah Berman, PE		Years of relevant experience with this employer	<1
Title	Geotechnical Senior Project Engineer		Years of relevant experience with other employer(s)	10
Degree(s) / Years / Specialization		B.S. / 2013 / Civil Engineering		
Active registration number / state / expiration date		43630 / LA / 03.31.24		
Year registered	2019	Discipline	Civil	
Contract role(s) / brief description of responsibilities		Project Engineer		
Experience dates (mm/yy–mm/yy)	Experience and qualifications relevant to the proposed contract; <i>i.e.</i> , “designed drainage”, “designed girders”, “designed intersection”, etc. Experience dates should cover the time specified in the applicable MPR(s).			
12/2023 - Ongoing	<b>LA1 Port Allen Canal Bridge, 4400024657/H.001234.6, LADOTD</b> Project Manager. The existing LA 1 Port Allen Canal Bridge, southbound bent 10S experienced settlement that exceeded the anticipated design. ECS performed pressuremeter testing in up to four borings within the extents of the bent 10S pile cap and up to two borings outside of the influence of the low-mobility grouting (total of six borings). ECS provided integrated services including the drilling of soil test borings by the ECS drill crew and crews under our supervision, undisturbed soil sampling and pressuremeter testing, and laboratory testing of representative soil samples for pertinent index and engineering properties. A final geotechnical data report will be provided to LADOTD upon completion of our analysis.			
12/2023 - Ongoing	<b>Savanne Road over Hanson Canal, 4400024657/H.014267, LADOTD</b> Project Manager. Provided geotechnical engineering services including geotechnical drilling, laboratory testing, and reporting. The drilling operations included performing two soil borings to 120-feet below the existing surface. The project included a laboratory testing program. All drilling and laboratory operations were conducted in accordance with LADOTD guidelines. A final data report with LADOTD boring logs is the final deliverable for the project.			
11/21 – 12/2023 (Previous employer)	<b>Ham Reid Road Extension, Calcasieu Parish, LA, CH Fenstermaker</b> Project Manager. Managed project that included geotechnical engineering services.			
10/21 - 12/21 (Previous employer)	<b>H.003931 I-10 Lake Charles, Lake Charles, LA, DOTD</b> Senior Staff Engineer. Reviewed logs, samples, and data.			
10/20 – 02/22 (Previous employer)	<b>Lee Drive (Highland Road – Perkins Rd) Capacity and Turning Movements, Baton Rouge, LA, City of Baton Rouge</b> Project Manager. Reviewed logs, samples, and data. She performed analysis/design. Provided supervision and prepared the report.			

09/20 – Present (Previous employer)	<b>Alphonse Forbes Road Bridge Replacement, Central, LA, ARCADIS</b> Project Manager. Reviewed logs, samples, and data. Performed analysis/design, provided supervision, and prepared the report.
08/20 – 09/20 (Previous employer)	<b>H.005967.5: Nelson Rd. Extension and Bridges - Calcasieu Parish, LA, DOTD</b> Senior Staff Engineer. Performed engineering analyses and design. She also prepared the report. The project consisted of providing a site characterization report for the new road and bridge, pile design, and pavement design recommendation. The geotechnical field exploration consisted of soil borings adjacent to the existing roadway, borings in undeveloped land adjacent to the Port of Lake Charles, and borings in Bayou Contraband. Field exploration was completed safely over the course of multiple weeks with up to four land and water drill crews on site at once. Laboratory testing included consolidation testing, compressive strength testing, and testing for classifying of soil samples collected in accordance with LADOTD standards. Terracon provided recommendations for precast concrete piles, pavement design, and site preparation.
10/19 – 02/22 (Previous employer)	<b>H.011235.5: I-49 South @ Verot School Road US 90 - Lafayette, LA, DOTD</b> Senior Staff Engineer. Reviewed logs, samples, and data. She performed analysis/design, provided supervision, and prepared the report.
11/16 – 03/17 (Previous employer)	<b>Cook Road Roundabout – Livingston Parish, LA</b> Project Manager. Coordinated drilling efforts, reviewed samples, prepared boring logs, performed analysis, and prepared the geotechnical report. This project consisted of the design and construction of a new roundabout intersection at Cook Road and LA Hwy 16.
Estimated 12/13 – 03/16 (Previous employer)	<b>SP No. H.002260.5, Goose Bayou Bridge, Geotechnical Investigation Goose Bayou Bridge Route LA 45, Jefferson Parish, LA, DOTD</b> Assistant Project Manager. Coordinated drilling efforts.
Estimated 12/13 – 03/16 (Previous employer)	<b>SP No. H.004435, I-12 to Bush-Segment 2, LA 3241 (LA 36 – LA 435), St. Tammany Parish, LA, DOTD</b> Assistant Project Manager. Performed driven pile analysis and soil boring analysis.
Estimated 12/13 – 03/16 (Previous employer)	<b>SP No. H.010612.5, I-20 MS River Bridge Soil and Scour Stabilization, Madison Parish, LA @ Vicksburg, MS, DOTD</b> Assistant Project Manager. Prepared AutoCAD renderings, Coordinated monitoring and drilling.
Estimated 12/13 – 03/16 (Previous employer)	<b>SP No. H.010601, I-10 LA 328 to LA 347, St. Martin Parish, LA, DOTD</b> Assistant Project Manager. Performed soil boring analysis.
Estimated 12/13 – 03/16 (Previous employer)	<b>SP No. H.003003, I-10E JCT I-49 – LA 328, Lafayette Parish and St. Martin Parish, LA, DOTD</b> Assistant Project Manager. Soil Boring analysis.

Firm employed by ECS Southeast, LLC				
Name	<b>Nathan Burke, EI</b>		Years of relevant experience with this employer	4
Title	Field Exploration Coordinator		Years of relevant experience with other employer(s)	0
Degree(s) / Years / Specialization			Bachelor of Science / 2019 / Civil Engineering	
Active registration number / state / expiration date			34266 LA / 3.31.2026	
Year registered	2019	Discipline	Engineer Intern	
Contract role(s) / brief description of responsibilities			Coordinates field activities and assist the geotechnical project manager.	
Experience dates (mm/yy–mm/yy)	Experience and qualifications relevant to the proposed contract; <i>i.e.</i> , “designed drainage”, “designed girders”, “designed intersection”, etc. Experience dates should cover the time specified in the applicable MPR(s).			
04/23 - Ongoing	<b>Savanne Road Over Hanson Canal, LADOTD, Houma, LA, LADOTD</b> Engineer Intern. The Savanne Road Over Hudson Canal project includes geotechnical engineering services including geotechnical drilling, laboratory testing, and reporting. The drilling operations consisted of performing two soil borings to 120-feet below the existing surface. The project included a laboratory testing program of the samples collected during drilling. All drilling and laboratory operations are being conducted in accordance with current LADOTD guidelines. A final data report with LADOTD borings logs is the final deliverable for the project. Mr. Burke is coordinating the drilling operations and laboratory testing.			
02/23 - Ongoing	<b>LA 1: Port Allen Canal Bridge, LADOTD, Port Allen, LA, LADOTD</b> Mr. Burke coordinated the field exploration services for the project including coordinating the drilling of soil test borings by the ECS drill crew and crews under our supervision to collect undisturbed soil sampling and perform pressuremeter testing.			
12/21 – 04/22	<b>MOVE Ascension-Hwy 929 and Parker Road Widening, Prairieville, LA, McKIM &amp; Creed</b> Engineer Intern. Mr. Burke assisted with managing this project. The scope of the work included subsurface exploration, laboratory testing, engineering analysis, and geotechnical recommendations for the construction of the new pavement and subsurface drainage at the site.			
10/22 – 03/24	<b>MOVE Ascension-LA-44 and Parker Road Roundabout, Prairieville, LA, McKim &amp; Creed</b> Engineer Intern. ECS provided geotechnical information for the design of a new roundabout at the intersection of LA-44 and Parker Road in Prairieville, LA. The scope of work for this project included subsurface exploration, laboratory testing, engineering analysis, and geotechnical recommendations for construction of the new pavement and subsurface drainage at the project site. Mr. Burke oversaw the day-to-day operations of this project.  This project is located at the intersection of LA-44 and Parker Road in Prairieville, LA. The intersection is currently a 4-way with traffic lights located in a residential and commercial area. LA-44 is two lanes in both directions while Parker Road consists of two lanes and a right-hand turn lane in both directions leading up to the intersection.			
08/23 – 02/23	<b>Acadiana Highschool Offsite Roadwork, Youngsville, LA, Ryan Companies</b> Engineer Intern. Mr. Burke coordinated and performed fieldwork including 11 total soil borings along Savoy Road, Railroad Street, and Détente Road in Youngsville, LA to provide pavement and utility recommendations to support road widening for increased traffic from the new Acadiana High School. He also oversaw the laboratory testing, analysis, and geotechnical report.			

Firm employed by Legacy Professional Services, LLC.				
Name	<b>Vincent Barker</b>		Years of relevant experience with this employer	2
Title	<b>Construction Manager</b>		Years of relevant experience with other employer(s)	20
Degree(s) / Years / Specialization			Bachelor of Science / 2004 / Business Management	
Active registration number / state / expiration date			N/A	
Year registered	N/A	Discipline	N/A	
Contract role(s) / brief description of responsibilities			<p>Mr. Vincent Barker is a seasoned employee with a rich background in overseeing large-scale construction projects. Mr. Barker dedication to quality control is evident in his meticulous daily surveillance and comprehensive inspection logs, ensuring adherence to the highest standards throughout the project lifecycle. Currently, Mr. Barker holds the following certifications:</p> <ul style="list-style-type: none"> <li>- DOTD Flagger</li> <li>- OSHA 10</li> <li>- The Clean Water Act</li> <li>- CPR/1<sup>st</sup> Aid</li> <li>- HAZWOPER 40</li> <li>- OSHA 30</li> <li>- USACE/NAVFAC Construction Quality Management for Contractors</li> </ul>	
Experience dates (mm/yy–mm/yy)	Experience and qualifications relevant to the proposed contract; <i>i.e.</i> , “designed drainage”, “designed girders”, “designed intersection”, etc. Experience dates should cover the time specified in the applicable MPR(s).			
4/24- Current	<p><b>MERCEDES-BENZ SUPERDOME, SUPERDOME IMPROVEMENTS PHASE 3B</b> – Legacy Professional Services, LLC is contracted as the DBE subcontractor on all four phases of the Superdome Improvement project. As Construction Manager, Mr. Barker has been on-site, assisting with daily QC/QA enforcement through daily project site inspections and observations of ongoing work. He manages the daily reception of materials – coordinates deliveries, and tracks Bills of Landing and Material Certificates. Mr. Barker assists with project planning, scheduling, coordinating, and work implementation. Mr. Barker is responsible for site safety and security as a part of the management team.</p>			
5/23-4/24	<p><b>CITY OF NEW ORLEANS DEPT. OF PUBLIC WORKS: MAX PAVE II</b> – As the Senior Resident Inspector, Vincent Barker was part of the \$2.3B program to execute citywide repairs of nearly 1,200 sites throughout the city. He was part of identifying and assessing various sites which drove the creation of a task order-based system. He monitored, documented, and reported on construction contractor quality control activities and construction safety, progress, testing, and surveying. Vincent completed on-site inspections of critical construction activities to review compliance with plans and specifications.</p>			
2/22-5/23	<p><b>CITY OF NEW ORLEANS DEPT. OF PUBLIC WORKS: CAPITAL IMPROVEMENTS PROGRAM, GENTILLY TERRACE</b> – Serving as Senior Resident Inspector, Mr. Barker performed site visits to perform quality control of survey data, reconnaissance, and inspection of existing drainage infrastructure to evaluate for design upgrades. Part of developing existing design drainage maps breaking the work areas into subbasins, developing drainage design models for 10, 25, and 100-year storms, and pipe sizing based upon model results.</p>			
2/19-2/22	<p><b>RTA CANAL STREET FERRY TERMINAL</b> – Vincent Barker provided construction services on the \$43M ferry terminal demolition and rebuilding of the newly designed terminal building. Mr. Barker’s responsibilities included overseeing the routine sampling and testing</p>			

	<p>of materials used on the project site and interpreting the construction plans, details, standards, and specifications. He also provided daily surveillance and daily logs of the project quality control/inspection activities. Day-to-day operations for Mr. Barker included inspections of work performed by prime contractors and subcontractors. He performed inspections of all marine demolition and construction. Mr. Barker was responsible for reviewing and processing monthly pay applications. He also conducted reviews of change orders and shop drawings and completed as-built drawings upon completion.</p>
3/17-2/19	<p><b>SWBNO JOINT INFRASTRUCTURE RECOVERY ROAD WATERLINE REPLACEMENT</b> – Mr. Barker provided engineering and construction services for replacing waterlines on the east bank of New Orleans that were damaged by Hurricane Katrina flooding. Vincent performed technical inspections as a subject matter expert on engineering quality control standards in the areas of compliance with engineering guidelines, tolerance standards, materials, bolts, fittings, pipe fitting, and coatings. Mr. Barker communicated with consultants and project managers on technical specifications for waterlines, coatings, fabrications, roadway structures, and QA/QC programs for trench protection roadway maintenance, traffic control, and/or erection. His responsibilities also included reporting on construction progress, maintaining files and reports regarding inspections, and planning check activities and findings.</p>
1/16-3/17	<p><b>ST. BERNARD CANAL CROSSINGS REHABILITATION</b> – Mr. Barker was responsible for inspecting all foundation prep and layout of Con Span Bridge installations for St. Bernard Parish Government Agency. He performed QA/QC during all phases of work performed by contractors.</p>



**17. Firm Experience:**

Identify the team’s project experience **most relevant** to the scope in the advertisement. **The projects should be limited to a total of 20, with no more than 5 projects being represented by the prime consultant and with no more than 3 projects represented by each sub-consultant on the team. If more than 5 projects are identified for the prime consultant, all projects identified after the first 5 will not be evaluated. If more than 3 projects are identified for a single sub-consultant, all projects identified after the first 3 from that sub-consultant will not be evaluated.** Include no more than one page per project. Projects identified shall only include work performed by firms on the team. The projects identified do not necessarily need to have been DOTD projects.

Firm name	Infinity Engineering Consultants, LLC.	Past Performance Evaluation Discipline(s)*	CE&/OV, Road
Project name	Mid-City Roadway Repairs Groups A & B		Firm responsibility (prime or sub?) Prime
Project number	IEC 12-053	Owner’s name	City of New Orleans Department of Public Works
Project location	New Orleans, LA	Owner’s Project Manager	Louis Haywood
Owner’s address, phone, email	1300 Perdido St., Suite 6W03, New Orleans, LA 70112   504-658-8056   lrhaywood@nola.gov		
Services commenced by this firm (mm/yy)	Group A: 11/16 Group B: 6/17	Total consultant contract cost (\$1,000’s)	\$3,500
Services completed by this firm (mm/yy)	Group A: 10/23 Group B: 3/24	Cost of consultant services provided by this firm (\$1,000’s)	\$3,500

Describe the project including the firm’s role and members involved. (Highlight staff to be used in this proposal.)

Infinity developed a comprehensive scoping report for the City of New Orleans addressing longstanding roadway damage across the neighborhoods of the Mid-City area. This report included the locations and descriptions of eligible roadway repairs that aided the city in obtaining FEMA grant funding.

Based on the scoping report, Infinity was the prime consultant designing roadway improvements for over **200 blocks of roadway improvements**. These improvements included **roadway pavement** and curbing, base for the roadway pavement, **subsurface drainage**, water and sanitary sewer installation, and adjustments as required to driveways and intersecting streets. All final grades were made to be compatible with adjacent properties and provide for a positive flow of water toward catch basins. The designs for all intersections and medians complied with ADA requirements for ramps.

Additionally, Infinity is providing **construction administration** on this project. Careful considerations were given to creating construction timelines that minimize the impact of street closures on residents, schools, and businesses. Infinity’s project manager is in continuous coordination with the contractor and resident inspectors to problem solve challenges that arise when digging in an older city, such as identification of unknown lines and extension of repairs by field change directives.

Total construction cost for these roadway projects: \$20,000,000.

- Project Relevancy**
- Resident Inspection Services
  - Construction Administration
  - Drainage Improvements Design
  - Roadway Replacement Design



Firm name	Infinity Engineering Consultants, LLC.	Past Performance Evaluation Discipline(s)*	CE&I/OV, Road
Project name	Canal Street/City Park Avenue Intersection Improvements		Firm responsibility (prime or sub?) Prime
Project number	13-008	Owner's name	New Orleans Regional Transit Authority
Project location	New Orleans, LA	Owner's Project Manager	Stephen Mitchell (No Longer with RTA)
Owner's address, phone, email	2817 Canal Street, New Orleans, LA 70119   504-827-8393   dlafrance@rtaforward.org		
Services commenced by this firm (mm/yy)	8/2013	Total consultant contract cost (\$1,000's)	\$912
Services completed by this firm (mm/yy)	1/2018	Cost of consultant services provided by this firm (\$1,000's)	\$465

Describe the project including the firm's role and members involved. (Highlight staff to be used in this proposal.)

As the prime consultant for the final phase of the Canal Streetcar Line refurbishment, Infinity was tasked with designing a transportation hub that seamlessly and safely integrated the streetcar line, bus lanes, vehicular traffic, cycling lanes, and pedestrian walkways. Deemed the "worst" intersection in the city by the RTA and Department of Public Works, Infinity redesigned the terminal to improve vehicular and streetcar safety. The new alignment improved traffic flow by adding proper signalization along City Park Avenue and Canal Boulevard; serving over 50,000 cars, buses, trucks, streetcars, and pedestrians every day.

Infinity's multi-discipline team collaborated on all components of the civil, mechanical, and electrical engineering needed for this project. Consequently, Infinity was able to provide in-house design for the roadway replacement, drainage improvements, track power and support poles (catenary system), underground utility relocation design, terminal mechanical and lighting protection systems, and streetcar track foundations. Throughout construction, Infinity provided construction administration and resident inspection services.

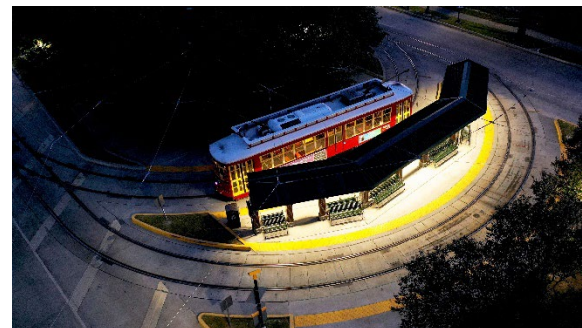
Infinity's construction administration & resident inspection services included:

- **Reviewing contractor submittals**
- Supporting engineering designs and construction documents during construction
- Responding to contractor Requests for Information (RFI's)
- Visiting the site and attending construction meetings
- Providing **engineering details as needed** to further clarify any engineering designs or provide engineering guidance on field resolution during construction
- Assisting with the preparation and processing of change orders
- Performing **on-site observation** to inspect the work and monitor progress
- Issuing revised drawings when prompted by agreed upon field changes and revisions
- Completing construction closeout, record documents, and manuals for owner's record

Total cost of project: \$10,000,000.

**Project Relevancy**

- **Construction Resident Inspection**
- **Roadway Replacement**
- **Traffic Detour Considerations**
- **Drainage Improvements**



Firm name	Infinity Engineering Consultants, LLC.	Past Performance Evaluation Discipline(s)*	CE&I/OV, Road
Project name	West Metairie Avenue Canal Stabilization & Street Rehabilitation		Firm responsibility (prime or sub?) Prime
Project number	IEC 16-050	Owner's name	Jefferson Parish Government
Project location	Metairie, LA	Owner's Project Manager	Matthew Zeringue
Owner's address, phone, email	1221 Elmwood Park Blvd, Suite 904, Jefferson, LA 70123   504-736-6783   mzingue@jeffparish.net		
Services commenced by this firm (mm/yy)	1/2017	Total consultant contract cost (\$1,000's)	\$770
Services completed by this firm (mm/yy)	Currently Under Construction	Cost of consultant services provided by this firm (\$1,000's)	\$680

Describe the project including the firm's role and members involved. (Highlight staff to be used in this proposal.)

Infinity is the prime engineering and construction administration consultant for the restoration of (2) miles of West Metairie Avenue between Roosevelt Boulevard and David Drive. The complete street replacement designs include coordinating work on both sides of the canal to minimize impact to the residential areas. The project requires the **replacement of West Metairie Avenue pavement** as well as adjacent canal bank stabilization. Adjacent sidewalks were also designed with side street turnout to meet ADA criteria.

**Project Relevancy**

- **Roadway Resident Inspection Services**
- **Drainage Improvements**
- **Pavement Replacement**
- **Traffic Control Documentation**

Infinity provided geometry and layout of the sheet pile, including the treatment of culvert outfalls per Jefferson Parish provided standards. The sheet pile design also includes material specifications. Adjacent sidewalks were also reconstructed with side street turnout to meet ADA criteria. Infinity's designs included improvement to the drainage system along the streets that was based off hydraulic studies. The drainage improvements included the following:

- Street outfall pipe replacement
- Adjustments of longitudinal and transverse slopes
- Adjustment of existing and addition of new drain inlets

Infinity is providing resident inspection and construction administration services throughout the project. The resident inspection services include the completion of daily construction reports. These reports include **traffic control documentation, description of completed work, weather conditions, and safety documentation.**

Total project cost: \$7,000,000



Firm name	Infinity Engineering Consultants, LLC.	Past Performance Evaluation Discipline(s)*	Road, CE&I/OV
Project name	Harmony Circle Downtown Loop Repavement Design & Inspection		Firm responsibility (prime or sub?) Prime
Project number	IEC 17-045	Owner's name	Regional Transit Authority
Project location	New Orleans, LA	Owner's Project Manager	Darrell LaFrance
Owner's address, phone, email	2817 Canal Street, New Orleans, LA 70119   504-827-8393   dlafrance@rtaforward.org		
Services commenced by this firm (mm/yy)	8/17	Total consultant contract cost (\$1,000's)	\$103
Services completed by this firm (mm/yy)	3/22	Cost of consultant services provided by this firm (\$1,000's)	\$83

Describe the project including the firm's role and members involved. (Highlight staff to be used in this proposal.)

Infinity was the prime consultant for the RTA to repair and reconstruct portions of the streetcar tracks within the heavily traveled Harmony Circle Downtown Loop, including along Howard Ave, Carondelet St., Canal St., and St. Charles Ave. This project entailed full reconstruction of the switch track turnouts, which required the removal of the asphalt surrounding the tracks to be replaced with new concrete.

The complete circle and portions of the connecting streets required **repavement and restriping**. Infinity reviewed and recommend upgrades to the signalization around the circle. Additionally, pedestrian and cycling mobility were considered in the design recommendations.

Infinity coordinated with Department of Public Works as well as Parks and Parkways to minimize the impact of the street closures on this important intersection that makes up the Downtown Loop. Infinity provided **construction administration and resident inspection services** to assist the Regional Transit Authority throughout the construction phase. Those services included:

- Review of submittals and shop drawings
- Prepared construction bidding documents
- Responding to contractor's RFI's
- Visiting the site to monitor progress
- Assisted in administering construction contract
- Conducted close-out services: substantial completion walk-through & preparation of record drawings

Total cost of project: \$4,600,000

**Project Relevancy**

- **Roadway Improvement Resident Inspection**
- **Construction Administration**
- **Construction Traffic Considerations**



Firm name	Infinity Engineering Consultants, LLC.	Past Performance Evaluation Discipline(s)*	CE&I/OV
Project name	South Galvez Street Lighting Improvements & Streetscape		Firm responsibility (prime or sub?) Sub
Project number	IEC 14-012	Owner's name	City of New Orleans DPW
Project location	New Orleans, LA	Owner's Project Manager	Josh Hartley
Owner's address, phone, email	1300 Perdido St., Suite 6W03, New Orleans, LA 70112   504-658-8056   jwhartley@nola.gov		
Services commenced by this firm (mm/yy)	6/14	Total consultant contract cost (\$1,000's)	N/A
Services completed by this firm (mm/yy)	1/16	Cost of consultant services provided by this firm (\$1,000's)	\$175

Describe the project including the firm's role and members involved. (Highlight staff to be used in this proposal.)

Infinity provided the electrical design for street lighting upgrades and the full depth street replacement construction administration to South Galvez Street between Canal Street and Tulane Ave.

As part of Infinity's electrical designs, the team performed a lighting study to determine the required spacing and dimension of the proposed poles. The prepared construction plans included designs for new power distribution and lighting controller systems, as well as specifications for the street lighting installation. The street lighting specifications addressed the following components: lighting layout and design, luminaire selection and specification, and pole foundation design.

Additionally, Infinity provided construction administrative services for the installation of streetscape components and infrastructure improvements along South Galvez Street. This included overseeing the addition of landscaping, decorative streetlights, and pedestrian lights. The roadway improvements included the installation of new waterlines and **improved drainage** which were constructed under Infinity's guidance. Infinity's construction administration & resident inspection services included:

- **Reviewing contractor submittals**
- Supporting engineering designs and construction documents during construction
- Responding to contractor Requests for Information (RFI's)
- Visiting the site and attending construction meetings
- Providing **engineering details as needed** to further clarify any engineering designs or provide engineering guidance on field resolution during construction
- Assisting with the preparation and processing of change orders
- Performing **on-site observation** to inspect the work and monitor progress
- Issuing revised drawings when prompted by agreed upon field changes and revisions
- Completing construction closeout, record documents, and manuals for owner's record

**Project Relevancy**

- **Construction Administration**
- **Full Depth Replacement of Street**
- **Drainage Improvements**



Firm name	ECS Southeast, LLC	Past Performance Evaluation Discipline(s)*	Geotech
Project name	LA1 Port Allen Canal Bridge	Firm responsibility (prime or sub?)	Prime
Project number	4400024657/H.001234.6	Owner's name	Louisiana Department of Transportation and Development
Project location	W. Baton Rouge Parish, LA	Owner's Project Manager	Kristy Smith, P.E.
Owner's address, phone, email	1201 Capitol Access Road, Baton Rouge, LA 70802, 225-379-1387, kristy.smith@la.gov		
Services commenced by this firm (mm/yy)	02/23	Total consultant contract cost (\$1,000's)	\$200
Services completed by this firm (mm/yy)	Ongoing	Cost of consultant services provided by this firm (\$1,000's)	\$200
Describe the project including the firm's role and members involved. (Highlight staff to be used in this proposal.)			
<p>The existing LA 1 Port Allen Canal Bridge, southbound bent 10S experienced settlement that exceeded the anticipated design. ECS performed pressuremeter testing in up to four borings within the extents of the bent 10S pile cap and up to two borings outside of the influence of the low-mobility grouting (total of six borings).</p> <p>ECS provided integrated services including the drilling of soil test borings by the ECS drill crew and crews under our supervision, undisturbed soil sampling and pressuremeter testing, and laboratory testing of representative soil samples for pertinent index and engineering properties. A final geotechnical data report will be provided to LADOTD upon completion of our analysis.</p>			

Firm name	ECS Southeast, LLC		Past Performance Evaluation Discipline(s)*	Geotech
Project name	MOVE Ascension - LA44 and Parker Road Roundabout, Prairieville, LA		Firm responsibility (prime or sub?)	Sub
Project number	N/A	Owner's name	Louisiana Department of Transportation and Development	
Project location	Ascension Parish, LA		Owner's Project Manager	Glenn Shaheen
Owner's address, phone, email	Subconsultant to McKim & Creed, Inc., 225.644.5523, 1022 South Purpera Ave., Gonzales, LA 70737, <a href="mailto:Gshaheen@mckimcreed.com">Gshaheen@mckimcreed.com</a>			
Services commenced by this firm (mm/yy)	10/22	Total consultant contract cost (\$1,000's)	\$11.8	
Services completed by this firm (mm/yy)	03/24	Cost of consultant services provided by this firm (\$1,000's)	\$11.8	
Describe the project including the firm's role and members involved. (Highlight staff to be used in this proposal.)				
<p>ECS provided geotechnical engineering services for the design of a new roundabout at the intersection of LA-44 and Parker Road in Prairieville, LA. The scope of work for this project included subsurface exploration, laboratory testing, engineering analysis, and geotechnical recommendations for construction of the new pavement and subsurface drainage at the project site.</p> <p>This project is located at the intersection of LA-44 and Parker Road in Prairieville, LA. The intersection is currently a 4-way with traffic lights located in a residential and commercial area. LA-44 is two lanes in both directions while Parker Road consists of two lanes and a right-hand turn lane in both directions leading up to the intersection.</p>				

Firm name	ECS Southeast, LLC		Past Performance Evaluation Discipline(s)*	Geotech	
Project name	Savanne Road over Hanson Canal			Firm responsibility (prime or sub?)	Prime
Project number	4400024657/H.014267	Owner's name	Louisiana Department of Transportation and Development		
Project location	Houma, LA		Owner's Project Manager	Kristy Smith, P.E.	
Owner's address, phone, email	1201 Capitol Access Road, Baton Rouge, LA 70802, 225-379-1387, <a href="mailto:kristy.smith@la.gov">kristy.smith@la.gov</a>				
Services commenced by this firm (mm/yy)	04/23	Total consultant contract cost (\$1,000's)	\$50.469		
Services completed by this firm (mm/yy)	Ongoing	Cost of consultant services provided by this firm (\$1,000's)	\$50.469		
Describe the project including the firm's role and members involved. (Highlight staff to be used in this proposal.)					
<p>The Savanne Road Over Hudson Canal project included geotechnical engineering services including geotechnical drilling, laboratory testing, and reporting. The drilling operations included performing two soil borings to 120-feet below the existing surface.</p> <p>The project included a laboratory testing program of the samples collected during drilling. All drilling and laboratory operations were conducted in accordance with current LADOTD guidelines. A final data report with LADOTD borings logs is the final deliverable for the project.</p>					



Firm name	Legacy Professional Services, LLC.	Past Performance Evaluation Discipline(s)*	CE&I/OV
Project name	Capital Improvements Program Gentilly Terrace Group C	Firm responsibility (prime or sub?)	Sub
Project number	No. DPW-RR053	Owner's name	Professional Engineering Consultants
Project location	New Orleans, LA	Owner's Project Manager	John Shires
Owner's address, phone, email	7600 Innovation Park Drive, Baton Rouge, LA 70820   225-769-2810   jshires@pecla.com		
Services commenced by this firm (mm/yy)	5/20	Total consultant contract cost (\$1,000's)	N/A
Services completed by this firm (mm/yy)	Ongoing	Cost of consultant services provided by this firm (\$1,000's)	\$95

Describe the project including the firm's role and members involved. (Highlight staff to be used in this proposal.)

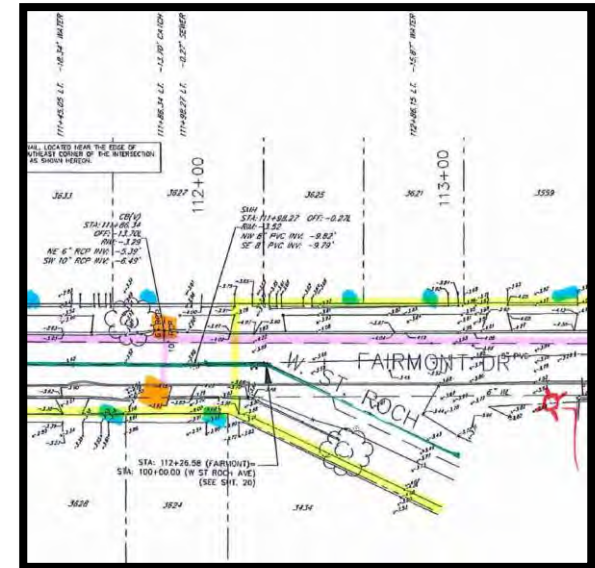
**PROJECT DESCRIPTION**

Legacy Professional Services (LPS) was contracted by Professional Engineering Consultants Corporation as a DBE subcontractor to provide engineering design services for FEMA-eligible street repairs on assigned streets within the Gentilly Terrace Group C project boundary area. The design services included the preparation of the Preliminary Drainage Design Report. Eligible streets within Group C included St Roch Blvd. Fairmont Dr. and Pleasure St. The preliminary drainage design report adhered to the LADOTD format for drainage calculations, SWB design guidelines and standards, and DPW Standard drawings and general specifications for street paving 2015 edition.

PROJECT DISCIPLINES	
Drainage Design	X
Staff Augmentation	X
Preliminary/ Final Design	X
Design Review	✓

**PROJECT RESPONSIBILITIES**

Field site visits to perform quality control of survey data; reconnaissance and inspection of existing drainage infrastructure to evaluate for design upgrades; development of existing design drainage maps breaking the work areas into subbasins; development of drainage design models for 10, 25, and 100-year storms; pipe sizing based upon model results.



## **18. Approach and Methodology:**

Provide a description of how the work will be performed and provide the proposed project schedule. Include any additional information or description of unique resources that are planned to be used to produce the deliverables. Include any proprietary technologies, methods or approaches that will be used on this project to improve quality or efficiency. If the proposal is for an IDIQ contract, the consultant should review the scope of services in Attachment A to the advertisement to obtain a general understanding of what a typical task order would entail. Based upon that understanding, the consultant should provide a sample schedule that identifies the major milestones, deliverables, tasks, etc., to demonstrate sufficient understanding of a typical task order. The duration of the task order is not required. This section shall be limited to four pages. **If more than four pages are included, all pages after the fourth page will not be evaluated. If the consultant has information it believes is proprietary, label it accordingly.**

Infinity offers a wide array of engineering services and technical support for contractors across all types of construction. Infinity understands the contractor's world as our team holds a great deal of experience in the construction realm. We recognize that our role is to provide support to our clients by ensuring the implementation of engineered designs through final construction. Among the services we provide to clients and contractors are:

- QA/QC Inspection Services
- Project Schedule Development
- Technical Submittals
- Construction Traffic Planning
- Construction Drawing Preparation
- Rigging Design & Certification

### **Conceptual Plan of Action**

Throughout the firm's history, Infinity has provided construction administration and resident inspection services for numerous projects above, over, and on the water. Often, Infinity's construction administration experience has additionally included the preparation of construction engineering and cost estimation documents. This experience has led to Infinity becoming well versed in the detailed planning and execution that comes with providing construction resident inspection.

Throughout the Bonnabel Blvd CE&I project, Infinity's goal is to ensure quality work is performed by the contractor though making timely inspections, issuing clear instructions, ensuring early materials testing, and promptly providing decisive answers to resolving conflicts. The following is a brief, high-level overview of Infinity's conceptual plan overseeing the roadway and drainage improvements installation along Bonnabel Blvd.:

- Review current engineering plans and prior inspection reports
- Prepare safety procedures and ensure all on-site personnel have the proper roadway safety training
- Conduct and attend pre-construction project set-up meeting with all relevant stakeholders
- Develop communications plan with DOTD to ascertain preferred format and method of maintaining construction field records
- Perform initial pre-construction visual inspections and coordinate collection of borings (if necessary)
- Share initial findings with LADOTD and the engineering firm of record
- Prepare "As-Built" plans along with final construction cost estimates
- Ensure the proper technology and software (HeadLight & SiteManager) are operational for inspection services
- Coordinate with DOTD and utility representatives for all planned construction impacting utility relocation
- Create construction timeline and schedule for coordinating necessary inspection/materials testing personnel
- Coordinate with key stakeholders on construction timelines that could impact traffic – specifically St. Catherine of Siena School
- Prepare final estimate packages and *Summary of Test Results* documentation
- Submit to DOTD *As-Built* plans to reflect all changes from the original plan
- Conduct and record daily inspections of construction contractor's operations
- Coordinate change orders and construction claims throughout the duration of the project

### **Initial Inspections and Establishing Inspection Protocols**

Crucial to the commencement of initial inspections is the consideration of traffic patterns along the roadway. Bonnabel Blvd is a major arterial roadway in Metairie, LA that runs perpendicular to four major throughfares, West Esplanade Ave., Veterans Memorial Blvd, Interstate 10, and Metairie Road. Within the construction site

sits St. Catherine of Siena school and church. This large church parish boasts a school enrollment of over 700 students from pre-kindergarten through seventh grade. One critical success marker for this project will be ensuring construction site safety and minimizing traffic disruptions around a heavily traveled school zone.

Within five (5) days of receiving a notice to proceed, Infinity will contact the DOTD project manager to schedule a pre-design project set-up meeting to introduce key personnel and sub-consultants who will be charged with executing the project. Key DOTD staff who may be involved with the work should attend to provide input in lessening traffic disruption during the construction. This meeting will be held to discuss the following:

- Roles and responsibilities for each stakeholder and consultant
- Identify each individual who holds responsible charge for administering each element of the project
- DOTD's construction engineering & inspection guidelines
- Define DOTD documentation procedures for recording daily construction activities
- Safety protocols and certifications needed to ensure workers' safety and site safety around the school
- Any relevant geotechnical or previous inspection reports
- Traffic patterns along Bonnabel; rules and requirements to avoid impacting the traffic patterns



St. Catherine Siena School  
(Photo taken after school dismissal)

At the onset of the project commencement, the team will acquire from the DOTD and the engineering firm of record all available drawings and reports. As part of the construction engineering process, our team will review all plans for comparison to conditions found at the time of the pre-construction inspections. Infinity will key in on previously indicated areas of concern and any potential future roadway improvements to Bonnabel Blvd.

Before conducting the inspection, the team will secure the site such that there are no threats to the public or personnel conducting the inspection. The flagman and site leader will prepare the site with safety cones, signs and will potentially re-direct traffic, as required. Infinity recognizes the heightened need to ensure the safety of all personnel and the public. The project manager will coordinate all field activities with the DOTD's assigned project manager and when applicable, any sub consultants. Due to Bonnabel Boulevard being a mix of residential and business entities, periods of time when traffic is low, or lanes can be taken out of service, need to be identified prior to construction scheduling. Infinity's engineers and resident inspectors have the capabilities to provide the following types of inspections:

- Structural Integrity
- Electrical Components
- Underwater Drone Inspections
- Aerial Drone Inspections
- Condition Surveys
- Mechanical Components
- Hydro Survey
- Aerial LiDAR

### Inspection Findings & Reporting

Once the preliminary inspections are coordinated and completed, Infinity will provide an initial finding report to the DOTD. This report will make note of any critical components that could impact safety during construction. Additionally, Infinity's engineers will review the current plans designed by the engineer of record to ascertain if there are any discrepancies in the plans compared to the current conditions along Bonnabel Blvd. Infinity's engineers will prepare the as-built construction plans to reflect any changes made from the original engineering plans, as well as a final opinion of probable cost. If necessary, Infinity will participate in joint inspections with the DOTD to review of any of the report findings.

For all main components of the roadway and sidewalks an overall rating will be included, such as a numerical rating of 0-9. Photographs of any damaged items that will need to be repaired will be included with the report. The engineer will also include a written summary with the report checklist that will describe the overall condition of the roadway and give a detailed explanation of any major defects. Infinity will ensure all inspectors are knowledgeable of the HeadLight & SiteManager software and have access to the technologies necessary to run those programs.

### As-Built Plans & Construction Documents

Infinity Engineering Consultants, L.L.C.

For the development of the as-built plans, Infinity intends to utilize its team of engineers to complete these tasks effectively and efficiently. Infinity's civil team holds extensive experience designing roadways within the Greater New Orleans vicinity. Engineered designs will be managed and lead by a designated Professional Engineer of Record that is specifically licensed by LAPELS in either civil engineering as required per the project scope.

Infinity's civil engineering manager and project manager, Ricardo Contreras PE, holds over 27 years of experience of civil engineering experience that encompasses program management, design, and construction administration. Throughout his career, Mr. Contreras has worked on various projects, including roadways, bridges, drainage improvements, water and wastewater improvements, site development, and flood control structures. As the Civil Engineering Manager, Mr. Contreras partners with Infinity's Project Engineers to make certain every design and deliverable is executed effectively and on time.

As a multi-discipline firm who has worked on numerous roadway improvement projects, Infinity's team is well equipped to provide any and all final construction drawings to the contractor. These construction documents include construction drawings, technical specifications, and construction estimates. Once the DOTD has established a direction for any proposed changes from the initial inspections, Infinity can develop construction documents for the proposed designs. Infinity will work alongside the DOTD to incorporate further construction administration and resident inspection services. Additionally, Infinity's team will submit the construction documents for review to any and all governmental offices for permitting, including the LADOTD and Jefferson Parish Department of Public Works. If called upon, Infinity can also offer assistance in the solicitation and review of contractor bids.

### **Construction Administration & Project Closeout**

Infinity has teamed with ECS Southeast, LLC. to provide construction materials testing services and any geotechnical borings that could be necessary. ECS Southeast is a geotechnical engineering and environmental services firm, specializing in geotechnical and forensic engineering, construction materials testing, and construction project management. With 2,700 employees, ECS has grown to more than 90 offices and testing facilities spread across the Mid-Atlantic, Midwest, Pacific, Southeast and Southwest, including an office in Baton Rouge, LA.

If the DOTD's Testing Laboratory is unavailable, ECS can provide the necessary qualified, independent testing. ECS will ensure the required field-testing will be undertaken for quality assurance in accordance with the latest DOTD Sampling and Testing Manual. This includes the collection, submission, and proper documentation of all sampled materials to be tested by the DOTD District Testing Laboratories.

Throughout the duration of the construction, Infinity's resident inspectors will be onsite daily observing and documenting the contractor's progress. To ensure the adherence to the construction timeline, Infinity will hold periodic status meetings, the timeline of which will be determined during the initial project kickoff meetings. Additionally, Infinity has teamed with Legacy Professional Services to provide additional depth in resident inspection services to ensure the Bonnable Blvd project is completed within the estimated 98 days project timeline. Legacy specializes in large-scale infrastructure development, construction program and project management, asset management, and energy efficiency program and project management.

Construction closeout services will be provided; including, substantial completion inspections, the development of punch-lists, and final acceptance inspections, along with the preparation of record drawings. Having an experienced QA/QC inspector who is familiar with the critical components of a project is vital to the success of the job. Additionally, Infinity's inspectors receive constant support and communication from the engineers who will have familiarity with the designs of the project. Infinity inspectors coordinate between the contractor and the client to better understand budgets, deadlines, and the bottom line. If any construction deviations occur, Infinity inspectors are in the field to resolve any questions on site.

### **Skills/Knowledge/Experience with Local Conditions**

As a Metairie, LA based engineering firm operating across the Gulf Coast, Infinity is acutely aware of the topography, hydrography, soil conditions, and weather patterns of the New Orleans Metropolitan Area. When creating any design and construction administration service, Infinity's engineers account for the local conditions. Infinity has prepared construction engineering designs which ranged from a few thousand dollars to several million dollars completely with in-house

staff. With the project site less than three miles from Infinity's main office, our team is acutely aware of the importance of the Bonnabel Boulevard throughfare to connecting many diverse residential areas to Interstate 10 and subsequently Veterans Memorial Highway. The resident inspectors onsite will have the full backing of Infinity's engineering team, which could be onsite in less than 10 minutes if a problem arises.

Additionally, Infinity has been selected to provide engineering designs for upgrading the water distribution system starting at Metairie Rd. and ending at I-10 Service Rd along Bonnabel Blvd. The upgrades will include directional drilling 12" HDPE (approx. 4,000 LF), installing associated house connections, and replacement of disturbed roadways, curbs, driveways, and sidewalks. It is important to note that this project is separate from the advertised CE&I drainage improvements, as EJES Incorporated has been assigned to perform the construction resident inspection for Infinity's waterline designs. Through the design of the water distribution system upgrades, Infinity's engineering team will hold a great deal of institutional knowledge of the utilities systems and roadway along Bonnabel Blvd. This knowledge will help our civil team prepare the as-built plans efficiently and effectively. The Jefferson Parish Council chose Infinity for this project due to our firm's in-depth knowledge of the area and experience in executing high-profile roadway enhancement projects, such as two groups of Mid-City New Orleans roadway repairs, a waterline replacement in the French Quarter on Decatur Street, and the improvements to the Canal Street/City Park Avenue intersection.

Being that our firm is local, the majority of our workload is local. Our employees are local, and our teaming partners are local. It follows that the individual professional work experience of each has primarily been performed with consideration for local physical, geological, and chemical conditions. Our team believes that local conditions mean more than weather patterns, soil parameters, groundwater chemistry, and river stages. Understanding how to work with local agencies is a critical aspect of understanding the local conditions and is vital for executing and completing a project ahead of schedule and under budget. This applies worldwide, not only in Louisiana. The team we have assembled for this project has exceptional agency experience with working alongside Jefferson Parish. We have worked with Jefferson Parish and its council members by either directly providing service or through the permitting process for other projects, and we have established working relationships that help to keep the projects moving in a positive direction.

**Capacity:** Because we do not currently have a significant backlog of work beyond 2024's 1<sup>st</sup> quarter, if selected for this contract, Infinity is well positioned to focus on the needs of LADOTD. With **(11) Civil/Structural engineers** on staff, we will have roughly **12,000 of potential engineering man-hours** available going into 2024. This does not include the added depth of our subconsultants and our drafting staff.

**Reputation and References:** Infinity prides itself on customer satisfaction accomplished through producing good work for every project. We recognize that as consultants, the most important element of our existence is our reputation. Infinity has a great track record for repeat customers and referrals and shares a favorable reputation in the local engineering and business community. As evidence of that, it is best to point to the kind words written on our behalf in both the public and private sector that speak to Infinity's professionalism, quality of work, respect for cost and budget, and schedule.

**Ken Dugas, P.E., Chief Engineer Plaquemines Parish** - "Infinity completed a very thorough drainage study to justify expanding Ollie Drainage Pump Station. The \$16,500,000 station addition was constructed and has performed, as designed, through several heavy rain events and hurricanes. Infinity has designed several street and utility infrastructure improvements...They've proven to be good stewards of public funds. I would highly recommend Infinity."

**Martin Pospisil, EUR ING, Director of Infrastructure, Regional Transit Authority** - "Due to past experiences with them, and their vast experience providing detailed design of multiple river structures, we selected Infinity to perform the design of the new Canal Street Ferry Terminal. Infinity provided all dock structural components, including land and river piles, decks, and foundations, civil plans, and utility re-locations. I would highly recommend Infinity Engineering Consultants for projects requiring any riverfront developments."

**Billy Nungesser, Lt. Governor and Former Plaquemines Parish President** - "Based on our familiarity with Infinity Engineering through their design of the Ollie Drainage Pump Station Expansion...we had the confidence in this firm to provide the expertise necessary to responsibly utilize public funds. My directors relayed that their designs were completed in a timely manner....and was committed to providing Plaquemines Parish with the best possible service. I would recommend Infinity Engineering."

**19. Workload:**

For all contracts where a firm on the team is a prime consultant or sub-consultant and where **a)** the consultant selection was made by DOTD, and **b)** a contract was executed by the consultant and the contracting entity by the date the advertisement for this proposal was posted, list all work meeting the following criteria:

- 1) one of the team's firms is responsible for the performance of the work;
- 2) authorization to perform the work has been provided, as provided in the contract between the consultant and the contracting entity;
- 3) the work has not yet been performed and invoiced; and
- 4) the work is not currently suspended for an indefinite period of time.

For indefinite delivery/indefinite quantity (IDIQ) contracts, list open Task Orders individually.

List only the portion of the fees attributable to firms on the team.

Firm(s) <b>ALL FIRMS MUST BE REPRESENTED IN THIS TABLE</b>	Past Performance Evaluation Discipline(s) *	Contract Number and State Project Number	Project Name	Remaining Unpaid Balance**
Infinity Engineering Consultants, LLC.	Bridge	H.014267.5	Off-System Highway Bridge Program Savanne Road Over Hanson Canal	N/A
Infinity Engineering Consultants, LLC.	Bridge	H.014265.5	Off-System Highway Bridge Program North River Road Over Irving Branch	N/A
Infinity Engineering Consultants, LLC.	Bridge	Contract: 4400021516 State: H.013818, H.013818, H. 011986, H.012734	Moveable Bridges (5) Pointe Coupee, Lafourche, and Terrebonne Parishes	N/A
ECS Southeast, LLC	Geotech	4400024657/H.001234.6	LA1 Port Allen Canal Bridge	\$158,873
ECS Southeast, LLC	Geotech	4400024657/H.014267	Savanne Road over Hanson Canal	\$13,782
ECS Southeast, LLC	Geotech	4400024657/H.014259.5	Hubs Bayou and Sand Creek Bridges	\$128,632
Legacy Professional Services, LLC.	N/A	N/A	N/A	N/A

(Add rows as needed)

DO NOT SUM

\* The **only** past performance evaluation disciplines to be used are: Road, Bridge, Traffic, CE&I/OV, Geotech, Survey, Environmental, Data Collection, Planning, Right-of-Way, CPM, ITS, Appraiser and Other **(please specify)**. If a firm has more than one past performance evaluation discipline for any single project, the firm can use multiple rows to express the remaining unpaid balance per evaluation discipline.

\*\* Round to the nearest dollar. **Do not** round to the nearest thousands. If there are no active contracts with a remaining unpaid balance, place N/A in the Remaining Unpaid Balance column. **NOTE: ALL FIRMS MUST BE REPRESENTED IN THIS TABLE.** LEAVING THE "REMAINING UNPAID BALANCE" COLUMN BLANK IS NOT ACCEPTABLE.

**20. Certifications/Licenses:**

If the advertisement requires submission of licenses and/or certificates, include them here. **Otherwise, leave this section blank.**



The Louisiana Professional Engineering and Land Surveying Board has the following information on file:

Name:	Public Address:
Infinity Engineering Consultants, LLC	Mr. William Thomassie 4001 Division Street Metairie, Louisiana 70002

**License/Certificate Information w/ Supervision**

License	Status	First Issuance Date	Expiration Date	Supervisor(s)
EF.0003109	Active	03/09/2004	09/30/2024	Mr. William John Thomassie # PE.0027421 ; Mr. Raoul Vincent Chauvin III # PE.0028272

The Louisiana Professional Engineering and Land Surveying Board has the following information on file:

Name:	Public Address:
ECS Southeast, LLC	Ms. Lisa Carlisle 14030 Thunderbolt Place, Suite 500 Chantilly, Virginia 20151

**License/Certificate Information w/ Supervision**

License	Status	First Issuance Date	Expiration Date	Supervisor(s)
EF.0005838	Active	10/05/2015	03/31/2026	Mr. Joseph Charles Cobena # PE.0042069



**21. QA/QC Plan:**

If the advertisement requires submission of a QA/QC plan, include it here. **Otherwise, leave this section blank. If a QA/QC plan is included in this section and was not required by the advertisement, it will be redacted.**

**22. Sub-consultant information:**

If one or more sub-consultants will be used, provide the name, address, point of contact and phone number for each. Otherwise, leave this section blank.

<b>Firm Name</b> <b>(Name must match as registered with Louisiana's Secretary of State)</b>	<b>Address</b>	<b>Point of Contact and email address</b>	<b>Phone Number</b>
ECS Southeast, LLC	11211 Industriplex Boulevard, Suite 300 Baton Rouge, LA 70809	Joseph Cobena, P.E. jcobena@ecslimited.com	(225) 224-2583
Legacy Professional Services, LLC	4298 Elysian Fields Ave., #B New Orleans, LA 70122	Alcide Tervalon, III, MBA atervalon@legacyproserv.com	(504) 291-6900

(Add rows as needed)

**23. Location:**

If location is an evaluation criterion for this advertisement and the prime consultant intends to establish a local presence, describe the plan for doing so. **Otherwise, leave this section blank. Any information included in this section will be redacted if not required by the advertisement.**